

# COLUMBIA BOROUGH

## SPRING 2011 NEWSLETTER

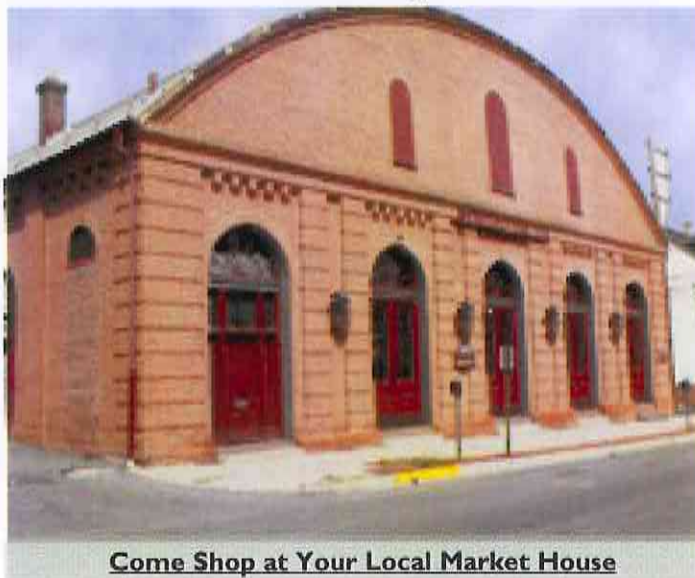
### Recent Columbia Market House Improvements

**FREE PARKING  
FOR MARKET HOUSE  
CUSTOMERS ON  
THURSDAYS AND  
FRIDAYS IN THE  
MUNICIPAL PARKING  
LOT BEHIND THE  
MARKET HOUSE**

Winter was a busy season at the Columbia Market House. Not only was it a busy for stand holders, but the Borough has been busy making much needed improvements to the Market Building.

The antiquated hot water heater has been upgraded to an on demand hot water heating system which now provides more than enough water to meet the demand of the Market vendors.

The radiant heat system has been replaced with individual Infra-red wall mount heating units. This new system provides a comfortable and consistent temperature for the enjoyment of shoppers and vendors.



**Come Shop at Your Local Market House**

- Pizza
- Lunchmeat & Cheese
- Jewelry
- AVON
- Breads, Snacks, & Treats
- Produce
- Baked Goods
- Massages
- Bulk Foods
- Ice Cream
- Hot Sauces
- Mexican Food
- Lunch Foods (hot dogs, hamburgers, bar-b-que sandwiches, soups, subs, salads and more...)
- Candy
- Candles

### Dates to Remember

Annual Spring Clean-up  
Friday 4/15/11 Curbside Pickup

Saturday 4/16/11 Drop off

Risk Watch Bicycle Safety  
Saturday 5/21 /11 9am-12pm

Earth Day - Sahn Salvage  
Saturday 4/30/11 9am-1pm

11th Annual 5K River Run/  
Walk  
Saturday 5/28/11 7am-10am

Memorial Day Parade  
Sunday 5/29/11 2:30pm

Holy Trinity Parish Festival  
6/8/11-6/11/11 6pm-10pm

Crusin Columbia Car Show  
Saturday 6/18/11 10am-3pm

Antique, Art & Craft Show  
Saturday 6/25/11 9am-3pm

Chiques Challenge Run/Kayak  
Saturday 8/13/11 Time TBA

23 rd Annual Bridge Bust  
Saturday 10/1/11 9am-3pm

2nd Annual Melissa Glenn 5K  
Saturday 11/5/11 7am-10am

**Market House**  
15 South 3rd Street  
Columbia, PA 17512

**Hours**  
Thursdays 9am-7pm  
Fridays 9am-6pm

### **Permits**

Columbia Borough requires the issuing of Zoning and Construction Permits & Licenses to allow for review & approval of new uses, new construction, obstructing the public right-of-way, and any significant renovations to public and private property. The following is a list of typical projects needing a permit or license:

- Creating/expanding a driveway or parking area
- Curb/sidewalk work,
- Installation of sheds/garages/pools/fences/walls/signs/roof repairs
- Constructing a new building or an addition to an existing building
- Installation/trimming/removal of any street tree or tree overhanging the street
- Repairing any sewer line outside of a building
- Creating a new food sales facility
- Door-to-door sales (other than by a nonprofit organization)
- Demolition of buildings/structures
- Commercial hauling of trash
- Operating rental dwelling or apartment

Any change of ownership & occupancy of property requires an inspection/correction of safety deficiencies & issuance of a Certificate of Occupancy.

Contact the code Compliance Department at 717-684-2467 if in doubt about the need for a permit, license or inspection for your project.

## Recycle...Recycle...Recycle



Columbia Borough Code, in accordance with Act 101, specifies that all commercial establishments must have a recycling program.

When Act 101 was passed in 1988, it mandated communities with a population greater than 5,000 residents, with a population density of 300 per square mile, to implement commercial and residential recycling programs. Having a population of approximately 10,311 residents, Columbia Borough is well within the limitations of this requirement.

Chapter 18, Article II, Section 9 of the Columbia Borough code specifies that "all persons [commercial & residential] within the borough shall source separate designated recyclable materials." Additionally, this Chapter outlines the violations and penalties that can be issued for non-compliance.

Establishing a recycling program may seem like a large task for some businesses, so the borough has designated a Recycling Coordinator to help walk individuals through this process.

Please contact Jake Graham at 717-684-2654 x29.

### What?

**The following items are required to be recycled:**

Clear Glass, Colored Glass, Aluminum, Steel Cans, Newsprint,

Yard Waste, Plastics, Tires, White Goods (large appliances), High Grade Office Paper and Corrugated Cardboard

### Biodegradable Bags/Recycle

#### Bins

Brown biodegradable (paper) bags are available for purchase at the Borough office which is located at 308 Locust Street for \$.75 each or 3 for \$2.00. Recycle bins are also available for \$7.00 each.

### How?

Article III, Section 11 specifies that "each person who owns a non-

residential or multifamily dwelling unit shall contract with a licensed hauler for the collection, transportation, and disposal of regulated municipal waste and designated recyclables produced at such unit to a facility and to accomplish the same shall:

- Provide recycling containers at easily accessible locations for source separation of recyclables.
- Provide written instructions to all persons occupying each unit.
- Arrange, through a contract with a licensed hauler, for the collection and transportation of the recyclable material.

### DID YOU KNOW???

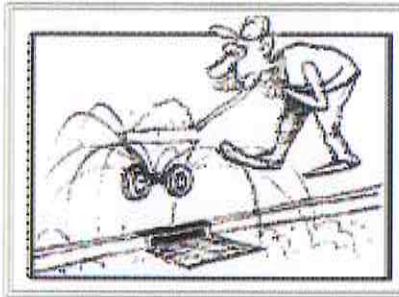
Lancaster County Solid Waste Management Authority located at 1299 Harrisburg Pike, Lancaster, PA 17604 opened a Household Hazardous Waste Collection Site in 2006.

Residents of Lancaster County can drop off household hazardous waste including but not limited to: Computers, Pesticides, Paint, Adhesives, Household Cleaners and Propane Tanks. For more information visit their website at [www.lcswma.org](http://www.lcswma.org) or call 717-397-9968

\*\*\*The Columbia Borough Yard Waste Facility, located at 254 Blue Lane, is open on the second Saturday of each month from 8:00am - Noon.\*\*\*



# RAIN



Rain is important for replenishing drinking water supplies, recreation, and healthy wildlife habitats but can become a problem when pollutants like pesticides, organic impurities, asbestos, chlorine and animal feces get into water supplies. The following are ways you can help prevent storm water pollution:

- Dispose of hazardous substances such as oil, cleaning supplies and paint - never pour them down any part of the storm sewer system, and report anyone who does.
- Dispose of trash in the proper receptacles.
- Use pesticides, fertilizers and herbicides properly and efficiently to prevent excess runoff.
- Pick up after pets and dispose of their waste properly. No matter where pets make a mess—in a backyard or at the park—storm water runoff can carry pet waste from the land to the storm sewer system to a stream.
- Report any discharges from storm water outfalls during times of dry weather—a sign that there could be a problem with the storm sewer system.
- Look for signs of soil and other pollutants, such as debris and chemicals, leaving construction sites that could impact storm water runoff to your community.
- Store materials that could pollute storm water indoors and use containers for outdoor storage that do not rust or leak to eliminate exposure of materials to storm water
- Install innovative storm water practices on residential property, such as rain barrels or rain gardens that capture storm water and keep it on site instead of letting it drain away into the storm sewer system.

***Encourage your  
friends,  
neighbors, and  
family members  
to practice  
environmentally  
friendly habits!***

### **Did You Know?**

**The Borough receives money for the items our residents recycle. This money helps to keep the tax millage rate lower.**

Columbia Borough Office  
308 Locust Street  
Columbia, PA 17512  
Phone: 717-684-2467

Check us out on  
the Web  
www.columbiapa.net

**PHONE NUMBERS TO REMEMBER**

Emergency  
911

Columbia Borough Police  
684-7735

Columbia Post office  
684-5391

Comcast Cable  
1-800-266-2278

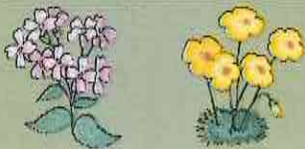
Columbia Public Library  
684-2255

Susquehanna Valley Chamber of  
Commerce - 684-5249

District Magistrate  
684-2761

Susq. Valley EMS (Ambulance)  
684-2400

Columbia Borough QRS  
717-449-5027



**Budget Information**

The current Real Estate Millage of 8.0 remains in effect for 2011.  
1 mill = \$1.00 for every \$1,000 of assessed value.

Revenue for the General Fund is projected at \$4,914,109. The majority of the revenue stream comes from two sources:

- 59% from Real Estate Taxes
- 17% from Earned Income Tax
- 24% realized through licenses, fines, interest, rentals, and inter-governmental revenue

Operating Expenses for the General Fund are projected the same for a balanced budget and include the following:

- 46% is attributed to police
- 13% is devoted to public works
- 17% covers insurances
- 24% is attributed to administration, solicitor, general government, municipal buildings, market house, and community investment.

**Spring Clean Up**

Friday April, 15, 2011  
Curbside Collection  
7:00 a.m. - Noon  
Yellow Tag

Saturday April 16, 2011  
Drop Off at River Valley Disposal  
7:00 a.m. - 11:00a.m.  
Blue Tag

Acceptable items	\$20 each	\$15 each
Refrigerator/Freezer (***)must have doors removed or secured to prevent entry), Dehumidifier, Trash Compactor Water Heater	Air Conditioner Stove	Washer/Dryer Double Sink Dishwasher Bathtub Television Sofa (Furniture)

Miscellaneous items	\$5 each	\$3 each
Mattress/Box Spring Microwave Tires (pair)	Rug/Carpet Push/electric Lawnmower Battery -Car (Truck or Marine)	VCR Grills (No gas tanks) Stereo Toilet

Dried Paint Cans Scrap Metal	FREE	FREE
---------------------------------	------	------

**UNACCEPTABLE ITEMS: NO SHINGLES, ENGINES OR GAS TANKS, VINYL TYPE FLOORING, BRICKS OR CONCRETE BLOCKS, YARD WASTE OR GARBAGE**

Item tags may be purchased at the Borough Office located at 308 Locust St., between 8:00 a.m. and 4:00 p.m. Monday through Friday. Please have a list of items prepared that need tags.

Fill out the registration form and purchase your tags.

**Curbside collection** requires a yellow tag be attached to the item. Place items in front of your home after 6:00 p.m. (Thursday April 15, 2010) and before 6:00 am Friday April 16, 2010.

Acceptable items will be collected between 7:00 a.m. and Noon **FRIDAY APRIL 15, 2010.**

You will be billed for all acceptable items that do **NOT** have a tag.

**Drop off** items may be delivered to River Valley Disposal 100 Deascenti Drive (off Franklin Road), Columbia, **SATURDAY APRIL 16, 2010** between 7:00 a.m. and 11a.m.

Acceptable items must have a blue tag attached to them. Proof of Columbia Borough residency is required (Driver's License is sufficient)

**PLEASE NOTE:  
Yard Waste Collection  
will begin on  
April 18, 2011  
The collection day has  
been changed from  
Tuesdays to Mondays**

**PROJECTS UPDATE**

**SR441 Relocation**

Construction is scheduled to commence as early as the 4th quarter of 2011 on SR441, the major north-south arterial running through the center of Columbia's downtown historic area. SR441 is used for local vehicular traffic in the Borough and for truck traffic hauling waste and other materials for US 30 and the Frey Landfill. The Borough council's initiative to move the road is part of its strategic plan to rejuvenate the historic downtown.

The project is designed to reduce the number of vehicles that travel downtown Columbia. Large and heavy trucks generate vibration that potentially undermines the foundations of some of the Borough's oldest structures. The relocation will reduce the number of trucks by approximately 600 per day.

**River Park Phase I**

The River Park, Phase I project is now complete. This project replaced and expanded the boating access ramp, improved and

expanded the parking area, and the canoe/kayak area with parking to the north of the Veterans' Memorial Bridge (Rt. 462), shoreline stabilization, floating docks, shoreline fishing access, and shoreline walkway.

**Downtown Security and Safety Project**

The Borough's downtown is undergoing a renaissance and is attracting numerous investors to the new "urban center" concept.

With this in mind we plan to install new energy efficient LED street lights in place of the old style "cobra" lights. The lights will provide a directed, softer light aimed at the pedestrian areas and for motorists. Security cameras have been placed at strategic locations for additional safety and security. New trees will be planted in the downtown in 2011.

**Parking Lots**

The parking lot located 23-29 S. 3rd Street is now complete. This lot allows for 22 additional parking spaces. Paving of the lot located at the corner of Front and Locust Streets will be complete in the Spring of 2011.